

List of hotels recommended and booking of 'RRCAT-Guest House'
for 40th DAE Safety & Occupational Health Professionals Meet (DAE-SOHPM) to be held at RRCAT,
Indore during 17-19 Oct, 2024

A. Essentia Luxury Hotel, Piplayahana, Indore: It is a 5-Star business hotel and a preferred choice by the delegates of the previous Conferences held in RRCAT



1. Address: Khasra No. 473, 474 & 475, Piplayahana Square (World Cup Square), Ring Road, Indore, Madhya Pradesh 452016
2. Website: <https://essentiahotels.in/>
3. For bookings please contact:
Telephone reservations on: +91-731-6725777, +91-88174 04602,
+91- 8817404560 – Mr. Prateek Saxena
Email: sales.indore@essentiahotels.in
4. Use Booking Code 'RRCAT-SOHPM'
5. Distance from Convention Centre, RRCAT, Indore (i.e. the venue for 40thDAE-SOHPM): 16.2 km
6. Distance from Railway Station, Indore: 5.1 km
7. Distance from Devi Ahilya Bai Holkar International Airport, Indore: 15.0 km
8. Room Tariff per room per day inclusive of breakfast in hotel Essentia Luxury.

ROOM CATEGORY	SINGLE OCCUPANCY	DOUBLE OCCUPANCY
Deluxe	INR 5000 + 12% GST = INR 5600	INR 5500 + 12% GST = INR 6160

- The above tariffs are especially applicable for the guests attending the 40th DAE-SOHPM. In order to avail special rates delegates are requested to mention the code 'RRCAT-SOHPM'.
- For more details about the hotel, delegates are requested to visit the hotel website.

B. Hotel Enrise by Sayaji, Rau(Indore): A 4-Star luxury hotel.

It is the best hotel in the close vicinity of RRCAT, Indore



1. Address: 27/1, 27/2, Village Pigdambar, Rau, Tehsil MHOW, Mumbai-Agra Highway, Indore, Madhya Pradesh 453331
2. Website: https://sayajihotels.com/Enrise_Rau
3. For bookings please contact:
Telephone reservations on: +91-731-4706666 / +91-73899-24444 – Mr. Yogendra
Email: reservation@enriseindore.com
4. Use Booking Code 'RRCAT-SOHPM'
5. Distance from Convention Centre, RRCAT, Indore (i.e. the venue for 40thD AE-SOHPM): 10.3 km
6. Distance from Railway Station, Indore: 15 km
7. Distance from Devi Ahilya Bai Holkar International Airport, Indore: 17 km
8. Room Tariffs per room per day inclusive of breakfast for hotel Enrise by Sayaji:

ROOM CATEGORY	SINGLE OCCUPANCY	DOUBLE OCCUPANCY
Deluxe	INR 4465 + 12% GST = INR 5000	INR 5000 + 12% GST = INR 5600
Suit	INR 7500 + 12% GST = INR 8400	

NOTE:

- These above tariffs are especially applicable for the guests attending the 40th DAE-SOHPM. In order to avail special rates delegates are requested to mention the code 'RRCAT-SOHPM'.
- For more details about the hotel, delegates are requested to visit the hotel website.

C. Hotel Papaya Tree, Rau (Indore): A good quality business hotel.

The Papaya Tree is another good hotel in the close vicinity of RRCAT, Indore

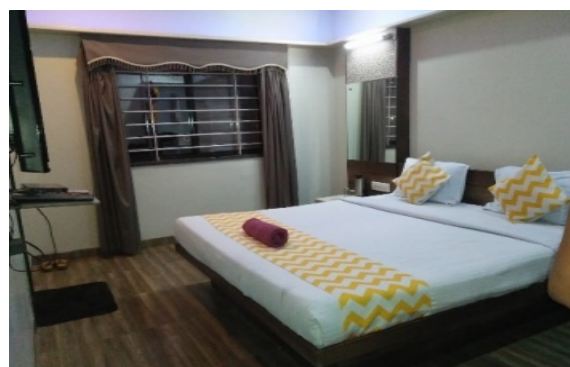


1. Address: A.B. Road, 'Indore Mega City Rau Circle', Rau, Indore, Madhya Pradesh 453331
2. Website: <https://www.papayatreehotels.com/contact-us/>
3. For bookings please contact:
Telephone reservations on: +91-731-4714747, +91-82258-55547 – Mr. Rohan Jain
Email: reservation@papayatreehotels.com
4. Use Booking Code '*RRCAT-SOHPM*'
5. Distance from Convention Centre, RRCAT, Indore (i.e. the venue for 40thD AE-SOHPM): 10.5 km
6. Distance from Railway Station, Indore: 15.2 km
7. Distance from Devi Ahilya Bai Holkar International Airport, Indore: 17.2 km
8. Room Tariff per room per day inclusive of breakfast in hotel Papaya Tree

ROOM CATEGORY	SINGLE OCCUPANCY	DOUBLE OCCUPANCY
Deluxe	INR 2700 + 12% GST = INR 3024	INR 3800 + 12% GST = INR 4256

- The above tariffs are especially applicable for the guests attending the 40th DAE-SOHPM. In order to avail special rates delegates are requested to mention the code '*RRCAT-SOHPM*'.
- For more details about the hotel, delegates are requested to visit the hotel website.

D. Hotel Bee Town, Rajendra Nagar, Indore: A Budget hotel



1. Address: Opposite Prince AU Cinema, Agra Mumbai Highway, Near IPS College, Rajendra Nagar, Hukma Khedi, Indore, Madhya Pradesh 452014
2. Website: www.beetown.in
3. For bookings please contact:
Telephone reservations on: +91-8817330972, +91-96300-04101– Mr. Bhupesh
Email: info@beetown.co.in, beetown_enquiry@yahoo.com
4. Use Booking Code 'RRCAT-SOHPM'
5. Distance from Convention Centre, RRCAT, Indore (i.e. the venue for 40th DAE-SOHPM): 5.1 km
6. Distance from Railway Station, Indore: 10.7 km
7. Distance from Devi Ahilya Bai Holkar International Airport, Indore: 12.2 km
8. Room Tariffs per room per day inclusive of breakfast in hotel Bee Town

ROOM CATEGORY	SINGLE OCCUPANCY	DOUBLE OCCUPANCY
Luxury Double Room	INR 2233 + 12% GST = INR 2500	INR 2411 + 12% GST = INR 2700

- The above tariffs are especially applicable for the guests attending the 40th DAE-SOHPM. In order to avail special rates delegates are requested to mention the code 'RRCAT-SOHPM'.
- For more details about the hotel, delegates are requested to visit the hotel website.

IMPORTANT INSTRUCTIONS REGARDING BOOKING OF HOTELS AND 'RRCAT- GUEST HOUSE'

(1) Above mentioned special rates are applicable for the delegates of 40th DAE-SOHPM for the period of 16-20 Oct, 2024.

(2) The period of October- December is an auspicious period for weddings in Indore. So, the hotels are very much in demand. Therefore, delegates are kindly requested to book the rooms as early as possible before they are sold out.

(3) The delegates are requested to book hotel rooms on their own in any recommended hotel using the booking code 'RRCAT-SOHPM'. Aadhar Card is mandatory for checking in the hotels.

After confirmation of booking please inform the name of your hotel with date of check in and check out to the organizers of 40th DAE-SOHPM at the following email ids with subject line as 'Information about Accomodation in Hotel during 40th DAE-SOHPM' .

sohpmguest@rrcat.gov.in sohpmnomination@rrcat.gov.in

It will help the organizers to arrange transport between hotel and the venue for the delegates.

(4) Room charges are to be paid by the occupants as per the above-mentioned rates and terms & conditions imposed by the hotels. The organizers are not responsible for any type of payment related issues, whatsoever. Please clarify all the conditions with the hotel before check-in.

(5) Delegates requiring accommodation in 'RRCAT-Guest House' are requested to send their request mentioning date and time of check-in and check-out at the following email ids with subject line as 'DELEGATE: Request for Accommodation in RRCAT, Guest House during 40th DAE-SOHPM'.

sohpmguest@rrcat.gov.in sohpmnomination@rrcat.gov.in

However, since the accommodation in 'RRCAT- Guest House' is limited, it is not guaranteed that all the requests will be entertained. Official ID-card is required for checking in RRCAT, Guest house.

(6) Some rooms in RRCAT, Guest house have been kept reserved for prize winners of various competitions of '40th DAE-SOHPM'. Prize winners desirous of staying in 'RRCAT- Guest house' may send their request to the following email idS with subject line as 'PRIZE WINNER: Request for Accommodation in RRCAT-Guest House during 40th DAE-SOHPM'.

sohpmguest@rrcat.gov.in sohpmnomination@rrcat.gov.in

(7) During the 40th DAE-SOHPM, the transport facility for pick-up and drop will be made available between the above recommended hotels and Convention Centre, RRCAT in morning and evening. It will not be possible to arrange transport facility for delegates staying in the hotels other than mentioned above.

---End of the document---